

DESCRIPTION

Portafilter

Main body

Water tank

Espresso cup



Nozzle

Filter basket

Piston

Brush

Scoop

INSTRUCTIONS



① Unscrew the outlet head.



② Remove the filter basket.



③ Unclicks the cup if needed.
⚠ Do not unclicks the cup if the water tank is filled with hot water.



④ Unscrew the water tank.



⑤ Remove the scoop and brush from the water tank.



⑥ Fill the scoop with fine coffee grounds (8gr).



⑦ Position the filter basket on the top of the scoop.



⑧ Reverse to transfer all the powder into the filter basket. Tamp hard with the back of the scoop and clean up the edge.



⑨ Put back the filter basket on the top of the main body.



⑩ Add boiling water into the water tank. **⚠ Place water tank on level and stable surface to fill it.**



⑪ Screw tightly the outlet head into the main body.



⑫ Screw tightly the main body onto the water tank.
⚠ Avoid burning yourself.



⑬ Unlock the piston from its travel position.



⑭ Hold the Nanopresso with two hands, as showed above. Start pumping above a cup.



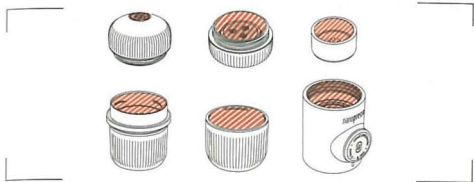
⑮ The first 8 strokes the pressure is built. Pump slowly until all coffee come out.

CLEANING

EN

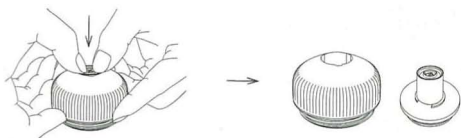
It's important to respect your machine and clean it regularly. A good maintenance will allow you to use your Nanopresso for many years.

After each use clean the hatched areas under running water. Let the parts dry separately.

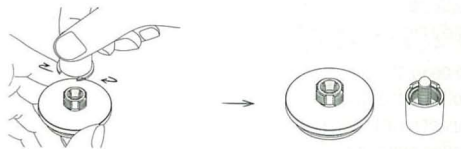


- From time to time (20 shots), deep clean the portafilter and the nozzle parts.

Clean up all those parts with hot water and the help of the provided brush.

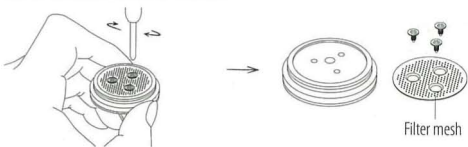


① Unclip the nozzle part.



② Unscrew the nozzle.

Once every 6 month (300 shots) you will have to clean the filter mesh and underneath surface.



Filter mesh

! WARNING !

Do not put any Nanopresso parts into dishwasher.